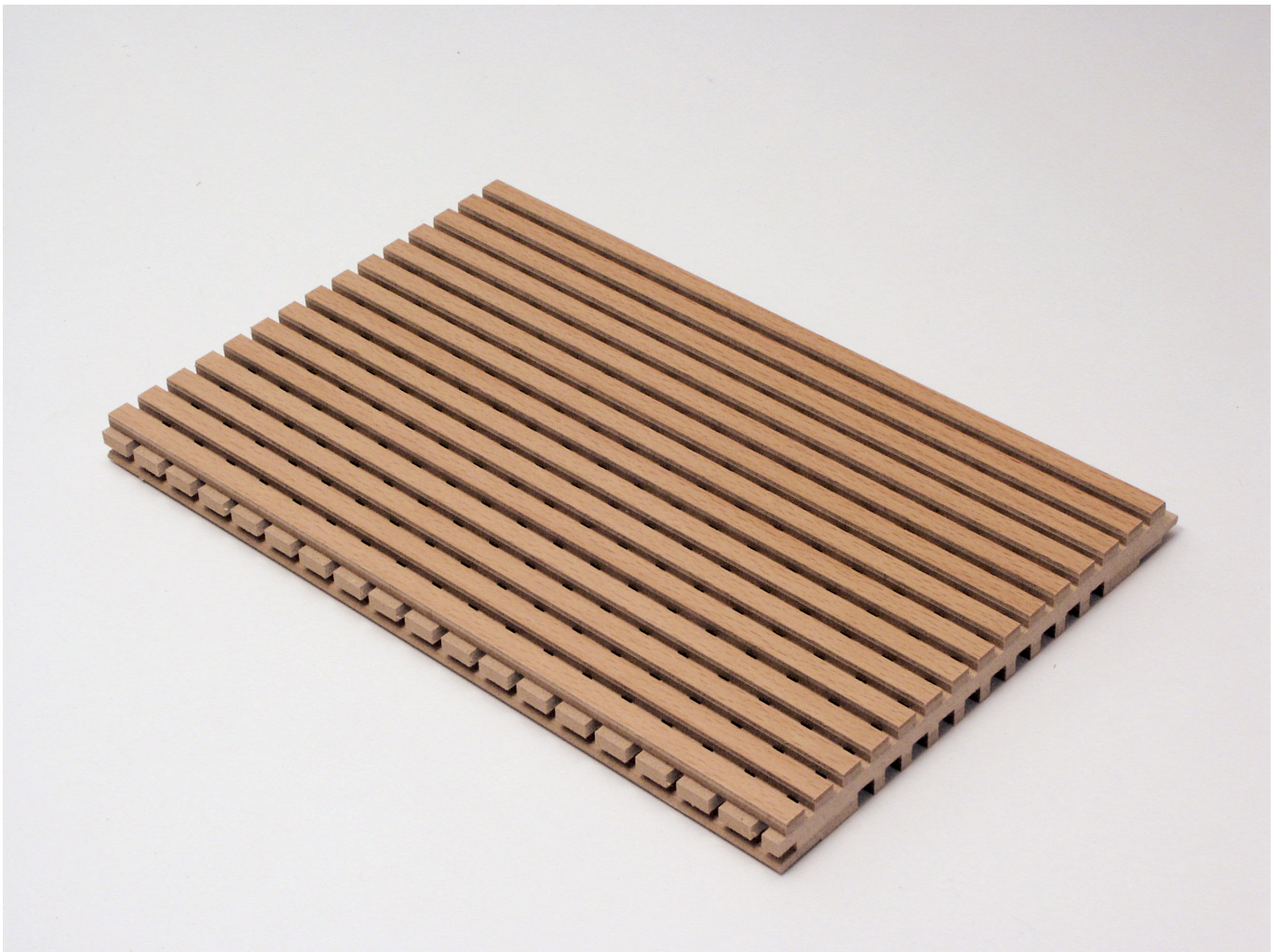


# CREAWOOD®

---

## Product Data Sheet



## Technical Facts

Support board	MDF, medium-density fibreboard
Fire resistance of the support board	<ul style="list-style-type: none"> <li>■ Normal combustibility, DIN B2, EN D-s2-d0</li> <li>■ Difficult to ignite, DIN B1, EN B-s2-d0</li> </ul>
Formaldehyde content	<ul style="list-style-type: none"> <li>■ E1, corresponding to max. 0.1 ppm</li> <li>■ EO without formaldehyde (max. 0.03 ppm)</li> </ul>
Visible surface	<ul style="list-style-type: none"> <li>■ Veneered</li> <li>■ Laminated</li> <li>■ Lacquered in RAL/NCS colors</li> </ul>
Rear side	<ul style="list-style-type: none"> <li>■ Raw, unlacquered</li> <li>■ Closed or regularly slitted</li> </ul>
Thicknesses	19 mm
Standard formats	2000, 2600, 2780, 3600, 4080 x 199 mm
Weight	With normal combustible support board: 10,5 kg/m <sup>2</sup> With difficult to ignite support board: 11,0 kg/m <sup>2</sup>

## Advantages

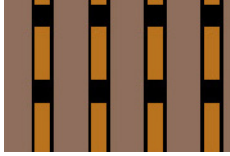
- Support board available in fire prevention class DIN B2 (normal combustibility) or DIN B1 (difficult to ignite)
- Easy installation with special clamps on tongue and groove
- Large variety of design options
- Wide-range acoustic absorption

## Type Overview

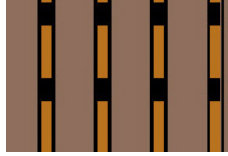
Type	Centres [mm]	Groove [mm]	Rear Side slitted	Rear Side non-slitted	Medium part dobbel grooved
<b>A8/4 classic</b>	8	4	x		
<b>A12/4 classic</b>	12	4	x		
<b>A28/4 classic</b>	28	4	x		
<b>A9/3 classic</b>	9	3	x		
<b>A13/3 classic</b>	13	3	x		
<b>A29/3 classic</b>	29	3	x		
<b>A10/2 plus</b>	10	2	x		x
<b>A14/2 plus</b>	14	2	x		x
<b>A13/3 plus</b>	13	3	x		x
<b>D8/4 classic</b>	8	4		x	
<b>D12/4 classic</b>	12	4		x	
<b>D28/4 classic</b>	28	4		x	
<b>D9/3 classic</b>	9	3		x	
<b>D13/3 classic</b>	13	3		x	
<b>D29/3 classic</b>	29	3		x	

The support boards are available in fire prevention class Normal Combustibility as well as Difficult to Ignite for all types.

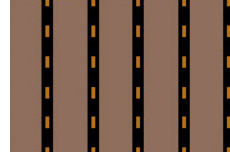
8/4 classic



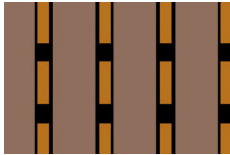
9/3 classic



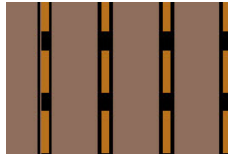
10/2 plus



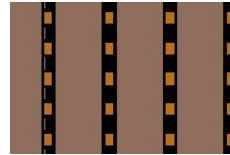
12/4 classic



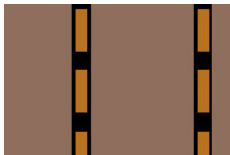
13/3 classic



13/3 plus



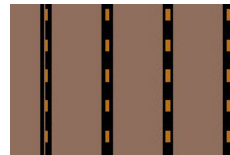
28/4 classic



29/3 classic



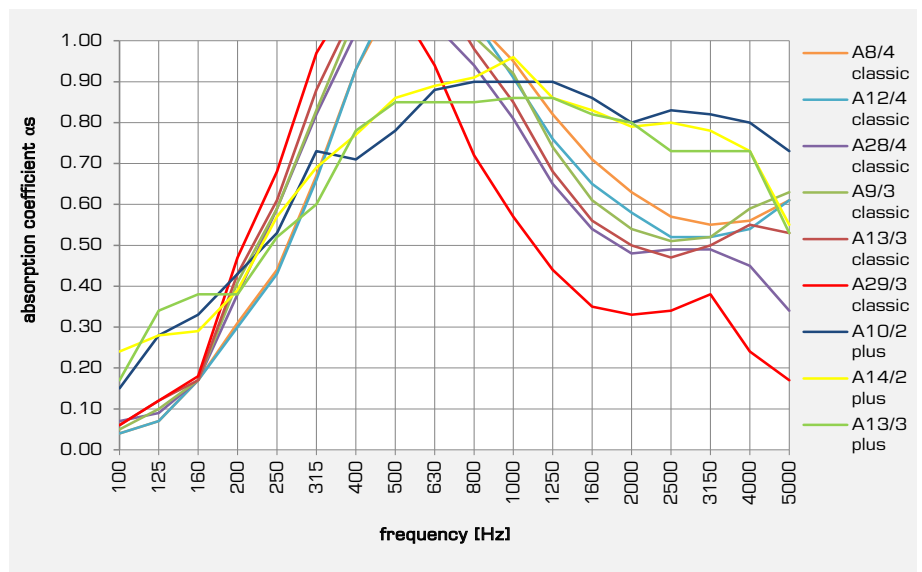
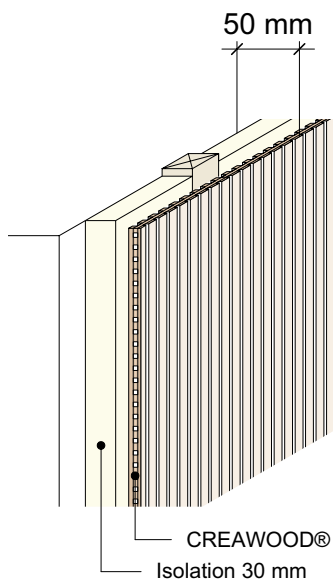
14/2 plus



## Absorption Classification according to EN ISO 11654

### Construction 50 mm

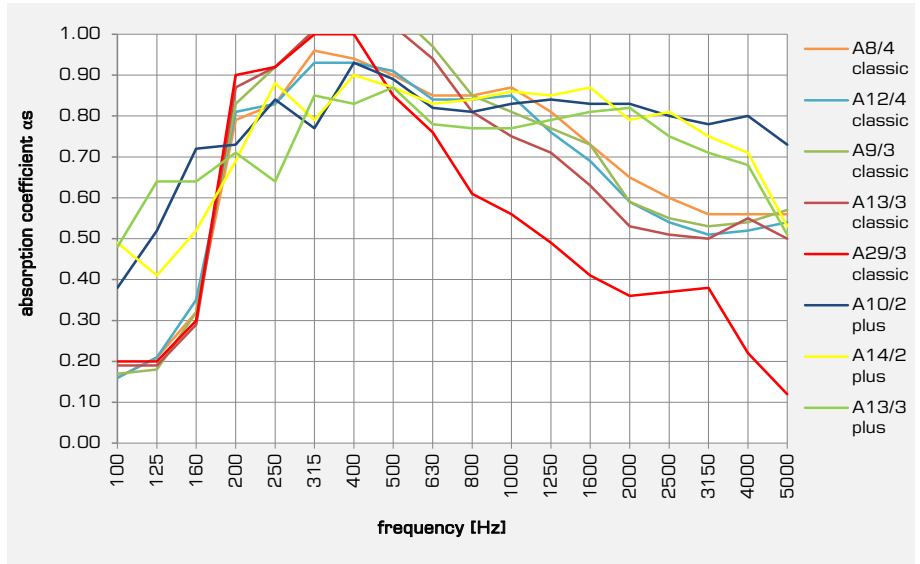
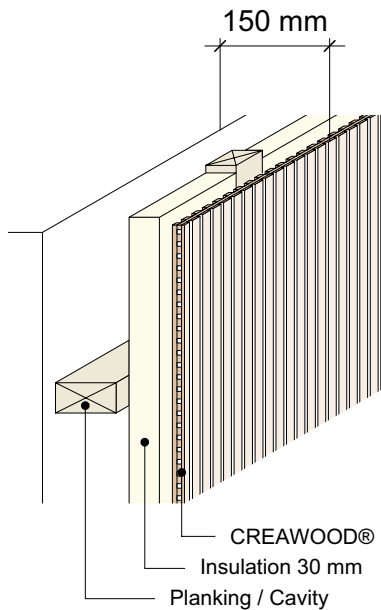
- CREAWOOD
- 30 mm Insulation, 40 kg/m<sup>3</sup>
- Cavity 0 mm



Type	Absorption coefficient $\alpha_w$	Absorption class
A8/4 classic	0.70 (M)	C
A12/4 classic	0.65 (M)	C
A28/4 classic	0.55	D
A9/3 classic	0.65	C
A13/3 classic	0.60	C
A29/3 classic	0.40	D
A10/2 plus	0.80	B
A14/2 plus	0.80	B
A13/3 plus	0.75	C

### Construction 150 mm

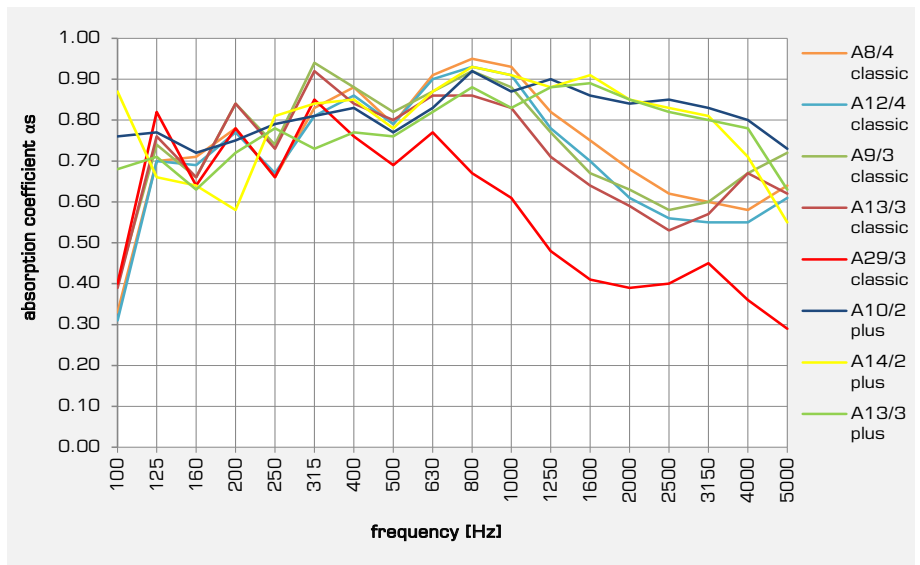
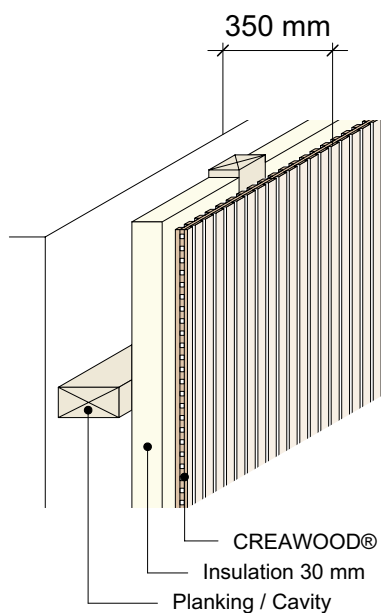
- CREAWOOD
- 30 mm Insulation, 40 kg/m<sup>3</sup>
- Cavity 101 mm



Type	Absorption coefficient $\alpha_w$	Absorption class
A8/4 classic	0.70 (L)	C
A12/4 classic	0.65 (LM)	C
A9/3 classic	0.65	C
A13/3 classic	0.60	C
A29/3 classic	0.40	D
A10/2 plus	0.85	B
A14/2 plus	0.80	B
A13/3 plus	0.80	B

### Construction 350 mm

- CREAWOOD
- 30 mm Insulation, 40 kg/m<sup>3</sup>
- Cavity 301 mm



Type	Absorption coefficient $\alpha_w$	Absorption class
A8/4 classic	0.75	C
A12/4 classic	0.65 (L)	C
A9/3 classic	0.75	C
A13/3 classic	0.70	C
A29/3 classic	0.45	D
A10/2 plus	0.85	B
A14/2 plus	0.85	B
A13/3 plus	0.85	B